

KOMMERLING USA, INC.

SERIES 76 MD PICTURE WINDOW

L.M. IMPACT ANCHORAGE DETAILS

REVISIONS			
REV	DESCRIPTION	DATE	APPROVED

GENERAL NOTES:

- THIS PRODUCT HAS BEEN EVALUATED TO COMPLY WITH THE CURRENT PROVISIONS OF THE FLORIDA BUILDING CODE (FBC) INCLUDING THE HIGH VELOCITY HURRICANE ZONES (HVHZ) AND IS BASED ON TESTING CONDUCTED TO TAS 202, TAS 201 & TAS 203 TEST PROTOCOLS PER TEST REPORT NO. NCTL-210-4097-01.
- ADEQUACY OF THE EXISTING STRUCTURAL CONCRETE, MASONRY AND 2X FRAMING AS A MAIN WIND FORCE RESISTING SYSTEM CAPABLE OF WITHSTANDING AND TRANSFERRING APPLIED PRODUCT LOADS TO THE FOUNDATION IS THE RESPONSIBILITY OF THE ENGINEER OR ARCHITECT OF RECORD FOR THE PROJECT OF INSTALLATION.
- 1X BUCK OVER MASONRY AND/OR CONCRETE IS OPTIONAL. WHERE 1X BUCK IS NOT USED, DISSIMILAR MATERIALS MUST BE SEPARATED WITH APPROVED COATING OR MEMBRANE. SELECTION OF COATING OR MEMBRANE IS THE RESPONSIBILITY OF THE ARCHITECT OR ENGINEER OF RECORD.
- THE INSTALLATION DETAILS DESCRIBED HEREIN ARE GENERIC AND MAY NOT REFLECT ACTUAL CONDITIONS FOR A SPECIFIC SITE. IF THE INSTALLATION METHODS DEVIATE FROM THESE APPROVED DETAILS THIS WOULD REQUIRE FURTHER INVESTIGATION BY A LICENSED OR REGISTERED DESIGN PROFESSIONAL.
- ALL SETTING BLOCKS AND GASKET MATERIALS SHALL BE IN COMPLIANCE WITH THE CURRENT EDITION OF THE FLORIDA BUILDING CODE. SETTING BLOCKS SHALL BE NEOPRENE WITH A 70 TO 90 SHORE A DUROMETER. GASKET MATERIALS SHALL BE EDPM WITH A MINIMUM 60 SHORE A DUROMETER.
- IN HVHZ AND NON-HVHZ AREAS WHERE WINDBORNE DEBRIS PROTECTION REQUIREMENTS EXIST, USE OF AN IMPACT PROTECTIVE SYSTEM COMPLYING WITH THE FBC REQUIREMENTS FOR WINDBORNE DEBRIS REGIONS IS NOT REQUIRED FOR THE PRODUCT(S) HEREIN.
- MATERIALS:
 - FRAME: RIGID VINYL-PVC
 - REINFORCEMENTS (FRAME): GALVANIZED STEEL
- GLAZING:
 - GLASS MEETS THE REQUIREMENTS OF ASTM E1300-04e01.
 - SEE GLAZING DETAIL ON SHEET 5 OF 5.
 - GLASS SHALL MEET SAFETY GLAZING REQUIREMENTS PER CURRENT EDITION OF THE FLORIDA BUILDING CODE.
 - INTERLAYER: KURARAY AMERICA SENTRYGLAS PER CURRENT MIAMI DADE NOTICE OF ACCEPTANCE (N.O.A.)
- PANEL OPERABILITY DESIGNATIONS:
 - (O) FIXED LIGHT IS STATIONARY.

ANCHOR NOTES:

- SHIM AS REQUIRED AT EACH INSTALLATION ANCHOR WITH A LOAD BEARING SHIM. SHIM WHERE SPACE OF 1/16" OR GREATER OCCURS. MAXIMUM ALLOWABLE SHIM STACK TO BE 1/4".
- FOR ANCHORING THROUGH FRAME INTO MASONRY/CONCRETE USE 1/4" ITW ADVANCED THREADFORM TAPCONS, HEX HEAD (SHOWN) OF FLAT HEAD WITH SUFFICIENT LENGTH TO ACHIEVE THE FOLLOWING. SEE NOTE 4 FOR ACCEPTABLE ALTERNATE ANCHOR TYPE
 - CONCRETE: 1-1/2" MINIMUM EMBEDMENT INTO SUBSTRATE WITH 1-1/2" MINIMUM EDGE DISTANCE.
 - CMU/MASONRY: 1" MINIMUM EMBEDMENT INTO SUBSTRATE WITH 2" MINIMUM EDGE DISTANCE.
- FOR ANCHORING THROUGH FRAME INTO WOOD FRAMING OR 2X BUCK USE #14 WOOD SCREWS, PAN HEAD (SHOWN) OR FLAT HEAD PER (ANSI B18.6.1) WITH MINIMUM GRADE 2 STRENGTH AND WITH SUFFICIENT LENGTH TO ACHIEVE 1-1/2" MINIMUM EMBEDMENT INTO SUBSTRATE WITH 1" MINIMUM EDGE DISTANCE. SEE NOTE 4 FOR ACCEPTABLE ALTERNATE ANCHOR TYPE
- FOR ANCHORING THROUGH FRAME INTO MASONRY, CONCRETE OR WOOD FRAMING OR 2X WOOD BUCK, THE WURTH AMO III SPACING ASSEMBLY SCREW 7.5mm DIA. TYPE 2 CYLINDER HEAD GALVANIZED STEEL WITH MINIMUM EMBEDMENT AND MINIMUM EDGE DISTANCE BELOW CAN BE USED AS SUBSTITUTES TO ANCHORS IN ITEM NO. 2 AND 3 ABOVE.
 - CONCRETE: 1-1/2" MINIMUM EMBEDMENT INTO SUBSTRATE WITH 2" MINIMUM EDGE DISTANCE.
 - CMU/MASONRY: 1" MINIMUM EMBEDMENT INTO SUBSTRATE WITH 2-1/2" MINIMUM EDGE DISTANCE.
 - WOOD SUBSTRATE: 2-3/8" MINIMUM EMBEDMENT INTO SUBSTRATE WITH 2-1/2" MINIMUM EDGE DISTANCE.
 - THESE ANCHORS SUPPLIED BY KOMMERLING WITH DOOR ASSEMBLY (ITEM NO. 7 IN BOM).
- INSTALLATION ANCHOR CAPACITIES FOR PRODUCTS HEREIN ARE BASED ON SUBSTRATE MATERIALS WITH THE FOLLOWING PROPERTIES:
 - WOOD - MINIMUM SPECIFIC GRAVITY OF 0.42 (NON-HVHZ) AND 0.55 (HVHZ).
 - CONCRETE - MINIMUM COMPRESSIVE STRENGTH OF 2500 PSI.
 - MASONRY - STRENGTH CONFORMANCE TO ASTM C-90 MEDIUM WEIGHT WITH COMPRESSIVE STRENGTH OF 1900 psi (DENSITY > 117 PCF).

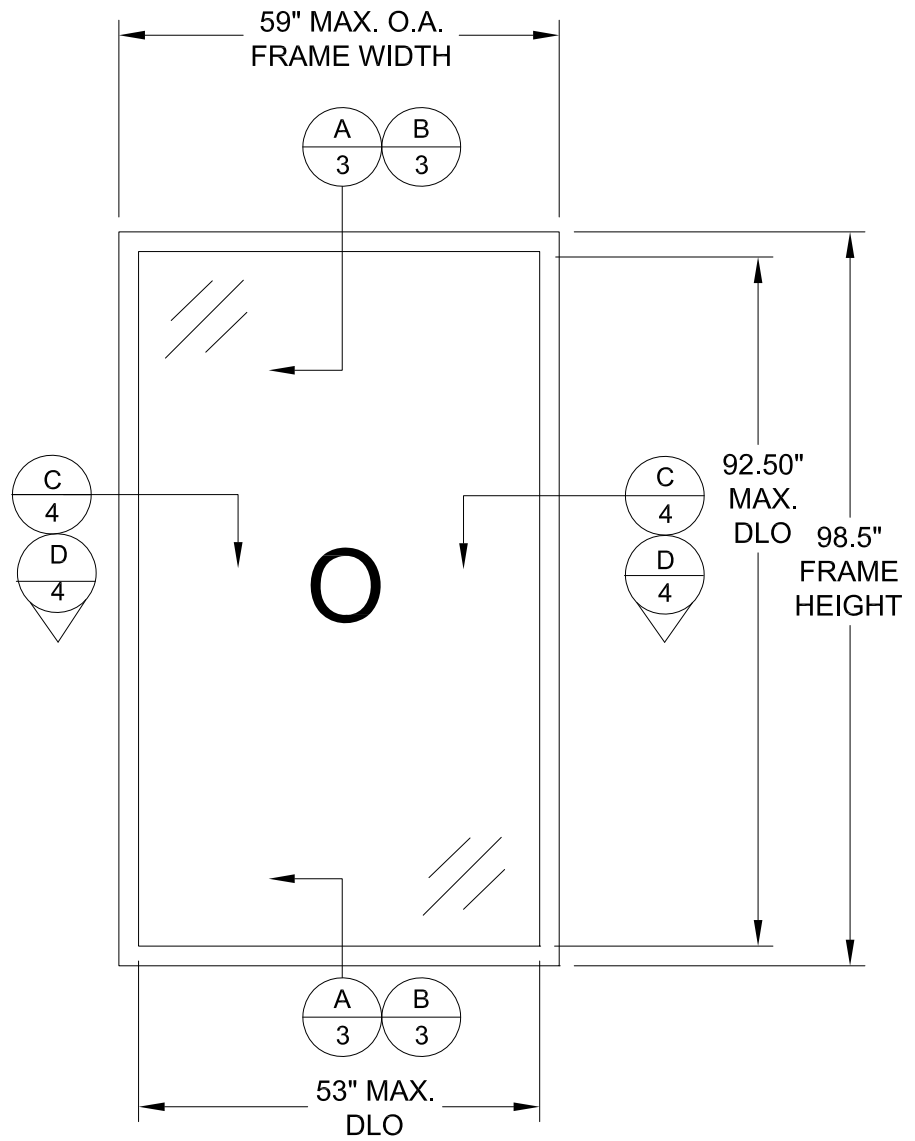
TABLE OF CONTENTS	
SHEET NO.	DESCRIPTION
1	GENERAL NOTES
2	ANCHOR ELEVATION & LAYOUT
3-4	INSTALLATION DETAILS
5	B.O.M., CROSS SECTIONS & GLAZING DETAILS

KOMMERLING USA, INC. 3402 STANWOOD BOULEVARD HUNTSVILLE, AL 35811		
SERIES 76 MD VINYL PICTURE WINDOW L.M. IMPACT GENERAL NOTES		
DRAWN: JRM	DWG NO. NL-0100	REV -
SCALE NTS	DATE 12/13/2017	SHEET 1 OF 5

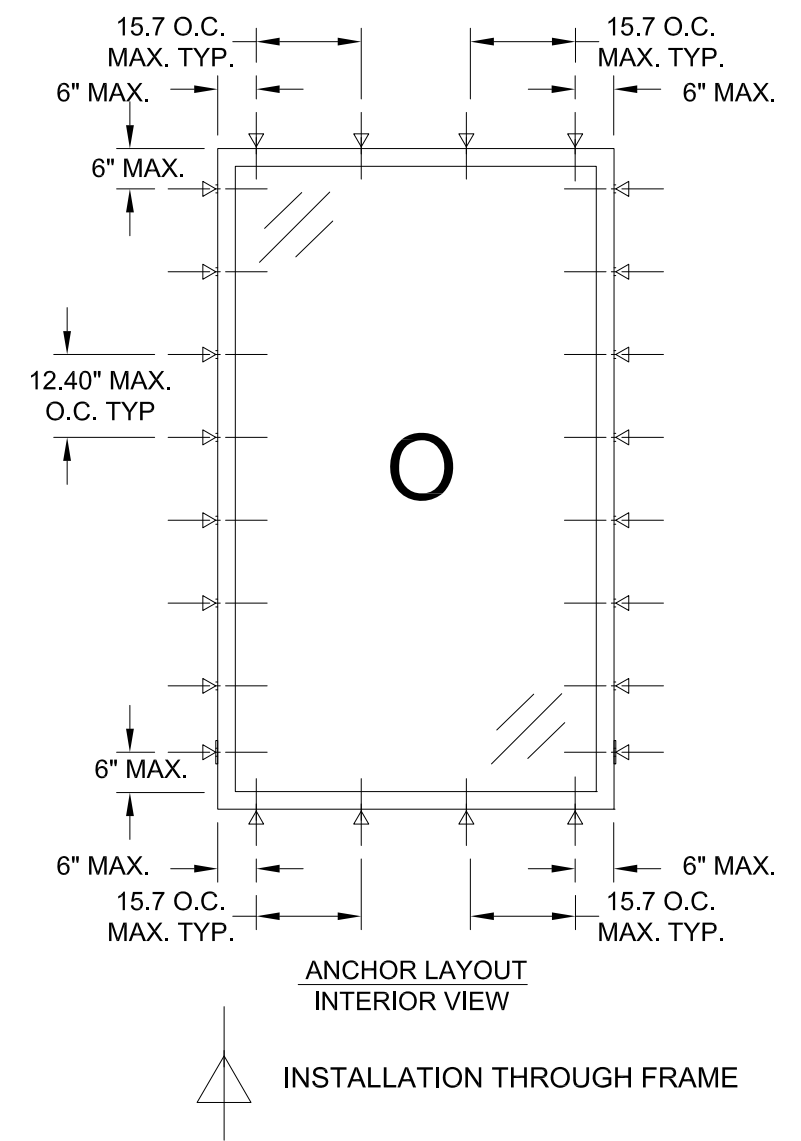
ROBERT J. AMORUSO
 FL. P.E. NO. 49752

12472 LAKE
 UNDERHILL RD
 NO. 148
 ORLANDO, FL 32828
 robert.amoruso@
 comcast.net

REVISIONS			
REV	DESCRIPTION	DATE	APPROVED



SERIES 76 MD VINYL P.W.
ELEVATION VIEW
 INTERIOR VIEW



**ANCHORAGE INSTALLATION REQUIREMENTS TO MEET
 DESIGN PRESSURE OF +/-75 PSF**

DESIGN PRESSURE RATING (PSF)		
L.M. IMPACT RATING		
MAX. OVERALL TESTED FRAME SIZE (IN)	MAX. DESIGN PRESSURE (PSF)	QUALIFIED CONFIGURATION
59" X 98.5"	+/- 75.0	O
SEE GLAZING DETAIL ON SHT. 6		

KOMMERLING USA, INC.
 3402 STANWOOD BOULEVARD
 HUNTSVILLE, AL 35811

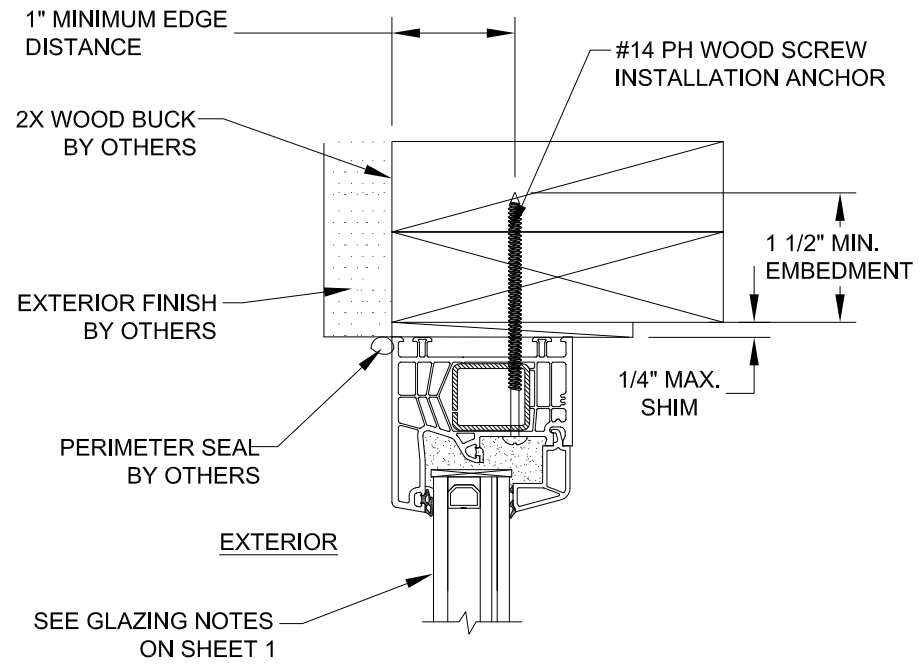
SERIES 76 MD VINYL PICTURE WINDOW
 L.M. IMPACT
 ANCHOR ELEVATION & LAYOUTS

DRAWN: JRM	DWG NO. NL-0100	REV -
SCALE NTS	DATE 12/13/2017	SHEET 2 OF 5

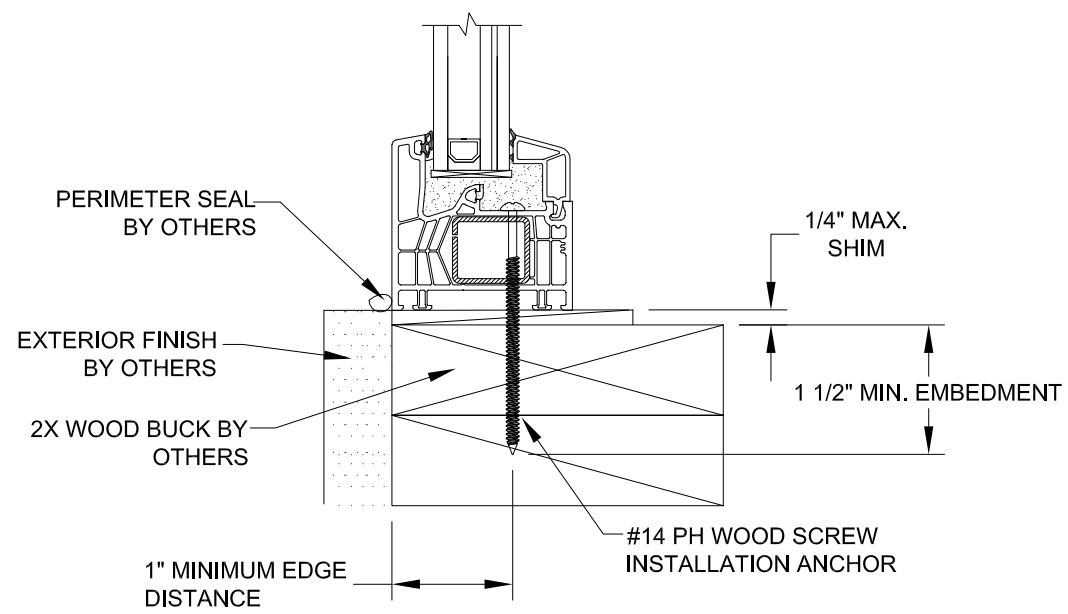
ROBERT J. AMORUSO
 FL. P.E. NO. 49752

12472 LAKE UNDERHILL RD
 NO. 148
 ORLANDO, FL 32828
 robert.amoruso@comcast.net

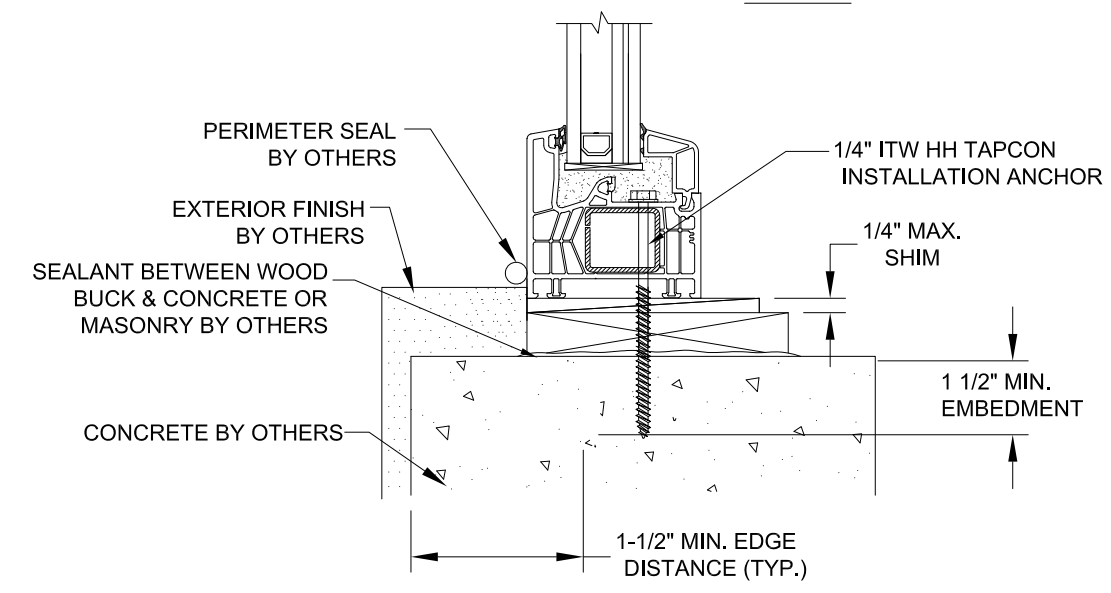
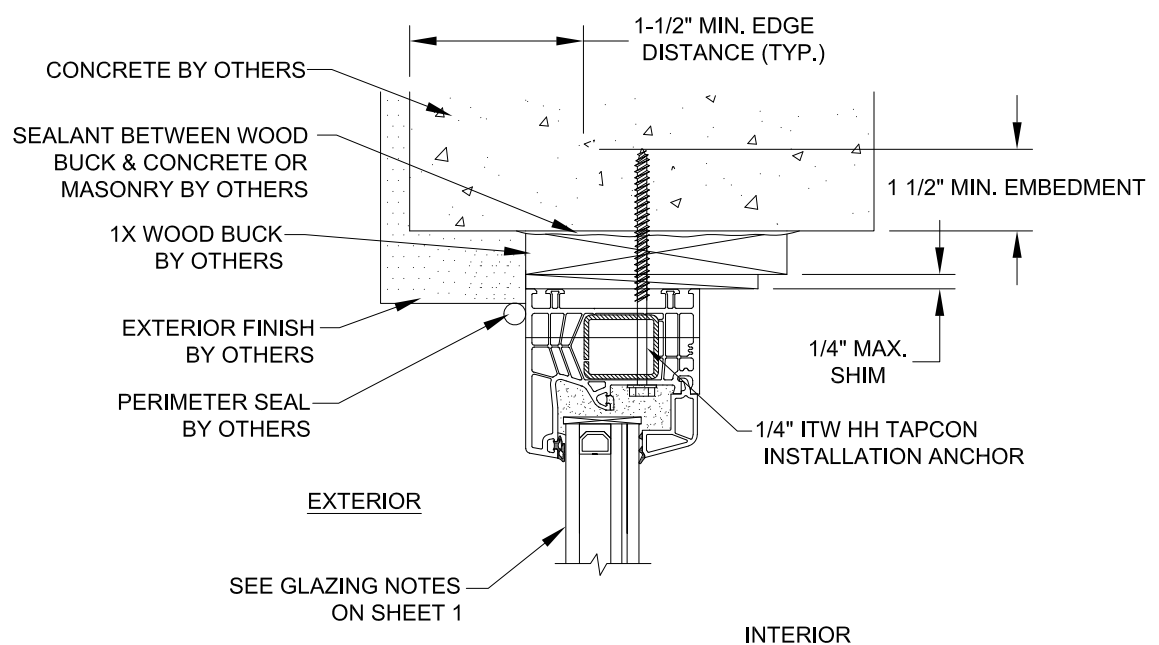
REVISIONS			
REV	DESCRIPTION	DATE	APPROVED



A
3
**VERTICAL SECTION
2 X WOOD SUBSTRATE
FRAME INSTALLATION**



B
3
**VERTICAL SECTION
CONCRETE SUBSTRATE
FRAME INSTALLATION**



KOMMERLING USA, INC.
3402 STANWOOD BOULEVARD
HUNTSVILLE, AL 35811

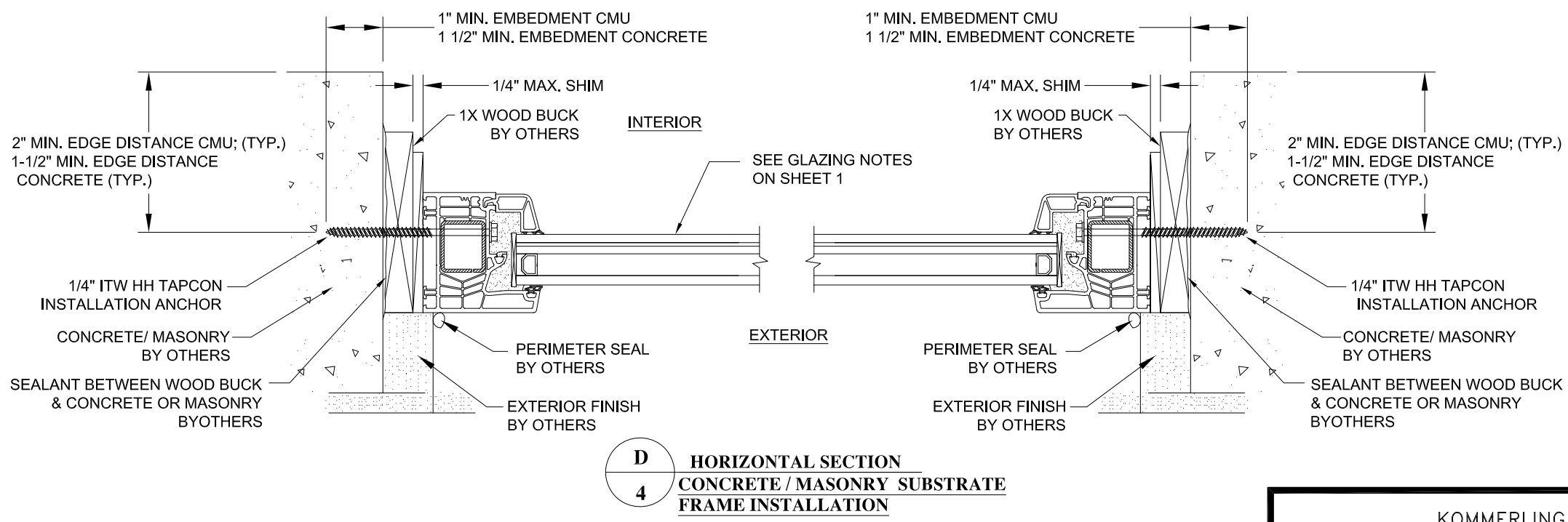
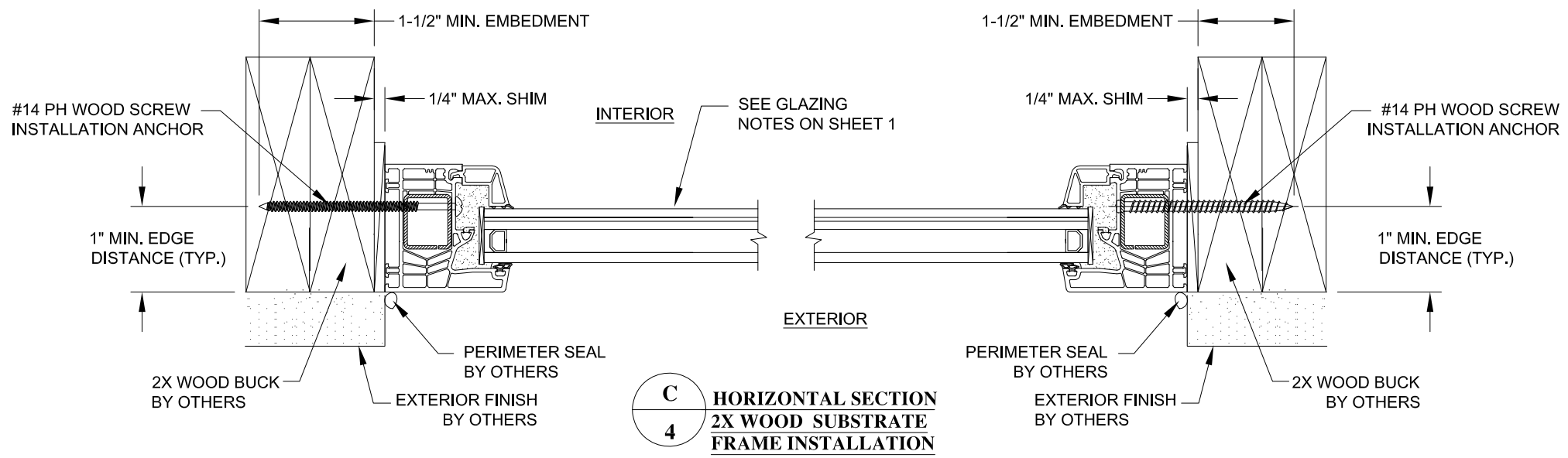
SERIES 76 MD VINYL PICTURE WINDOW
L.M. IMPACT
VERT. INSTALLATION DETAILS-2X WOOD/CONCRETE

DRAWN: JRM	DWG NO. NL-0100	REV -
SCALE NTS	DATE 12/13/2017	SHEET 3 OF 5

ROBERT J. AMORUSO
FL. P.E. NO. 49752

12472 LAKE
UNDERHILL RD
NO. 148
ORLANDO, FL 32828
robert.amoruso@
comcast.net

REVISIONS			
REV	DESCRIPTION	DATE	APPROVED



KOMMERLING USA, INC.
3402 STANWOOD BOULEVARD
HUNTSVILLE, AL 35811

SERIES 76 MD VINYL PICTURE WINDOW
L.M. IMPACT
HORIZ. INSTALLATION DETAILS -WOOD/CONC./MAS.

DRAWN: JRM	DWG NO. NL-0100	REV -
SCALE NTS	DATE 12/13/2017	SHEET 4 OF 5

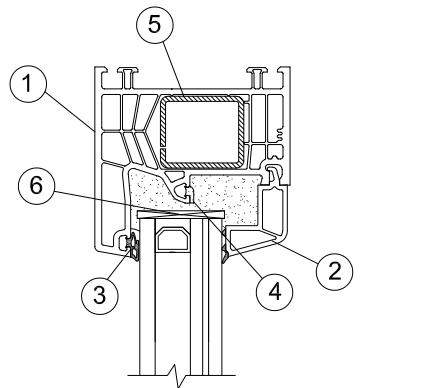
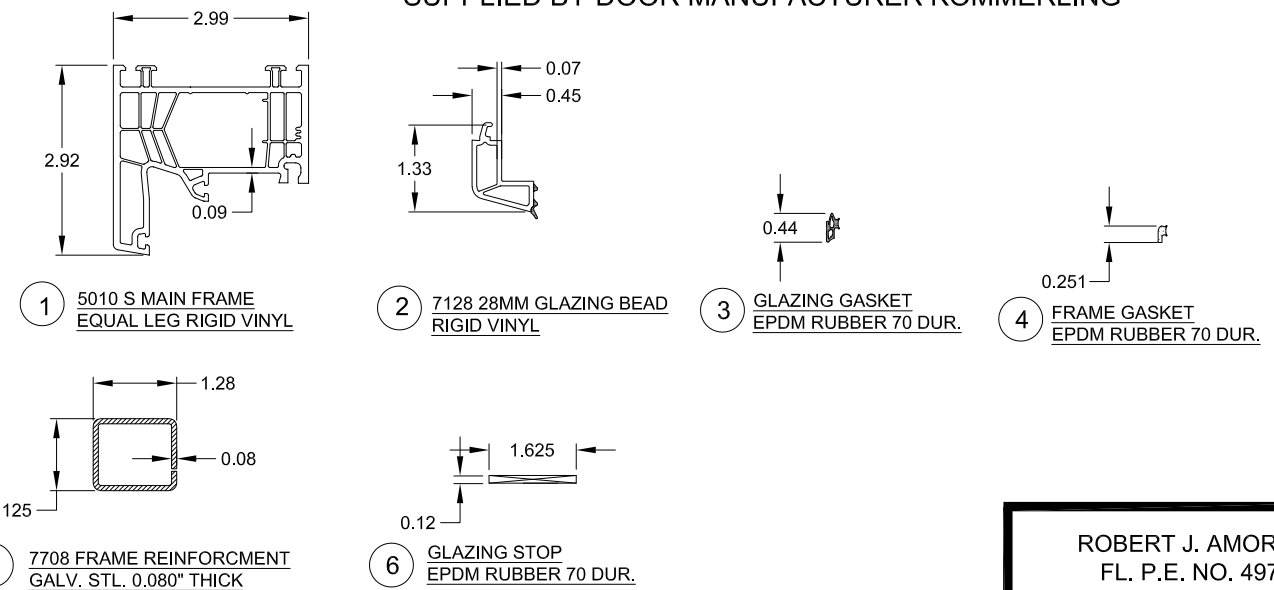
ROBERT J. AMORUSO
FL. P.E. NO. 49752

12472 LAKE
UNDERHILL RD
NO. 148
ORLANDO, FL 32828
robert.amoruso@
comcast.net

REVISIONS			
REV	DESCRIPTION	DATE	APPROVED

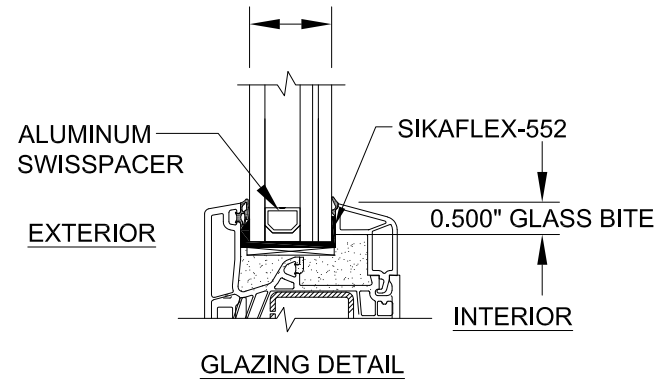
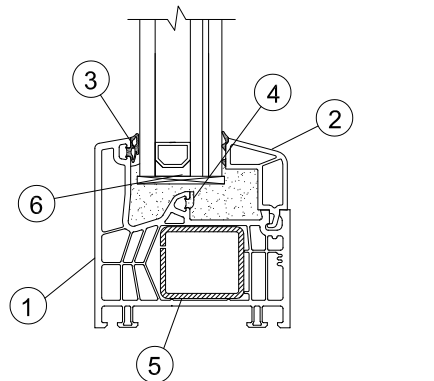
QTY.	PART NO.	DESCRIPTION	MANUFACTURER
1	76171	MAIN FRAME, RIGID VINYL	PROFINE
2	2638_1	1-1/8" I.G. LAMINATED GLAZING BEAD, RIGID VINYL	PROFINE
3	-----	GLAZING GASKET, EPDM RUBBER 70 DUR	PURCHASE
4	-----	FRAME GASKET, EPDM RUBBER 70 DUR	PURCHASE
5	PURCHASE	1.10" X 1.280" X 0.080" FRAME REINF., GALV. STEEL	PURCHASE
6	-----	GLAZING SPACER, RIGID VINYL	PROFINE
7	-----	AMO III 7.5MM DIA. CYLINDER HEAD SCREW, VARIABLE LENGTH BASED ON USAGE	WURTH *
8	PURCHASE	#14 PH OR FH WOOD SCREW	----
9	PURCHASE	1/4" DIAM. HH OR FH I.T.W. MASONRY ANCHOR	I.T.W.
10	PURCHASE	GLAZING SEALANT, SIKA 552 & 205 PRIMER	SIKAFLEX

* SUPPLIED BY DOOR MANUFACTURER KOMMERLING

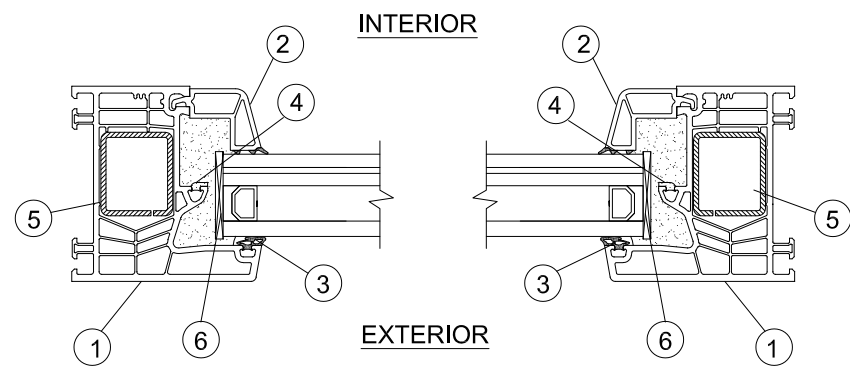


EXTERIOR INTERIOR

1.20" O.A. INSULATED GLASS CONSISTING OF:
EXT. 1/4" TEMP. GLASS, 0.380" AIR-SPACER, LAMI:
3/16" H.S. GLASS, 0.090" KURARAY AMERICA SENTRYGLAS, 3/16" H.S. GLASS INT.



TYPICAL CROSS SECTION FOR PARTS IDENTIFICATION EQUAL LEG FRAME



TYPICAL CROSS SECTION FOR PARTS IDENTIFICATION EQUAL LEG

KOMMERLING USA, INC.
3402 STANWOOD BOULEVARD
HUNTSVILLE, AL 35811

SERIES 76 MD VINYL PICTURE WINDOW
L.M. IMPACT
B.O.M. CROSS SECTIONS & GLZG. DETAIL

DRAWN: JRM	DWG NO. NL-0100	REV -
SCALE NTS	DATE 12/13/2017	SHEET 5 OF 5

ROBERT J. AMORUSO
FL. P.E. NO. 49752

12472 LAKE UNDERHILL RD
NO. 148
ORLANDO, FL 32828
robert.amoruso@comcast.net